

7th Informed Cities Forum

Who profits from heritage?

Communities, capital and urban space

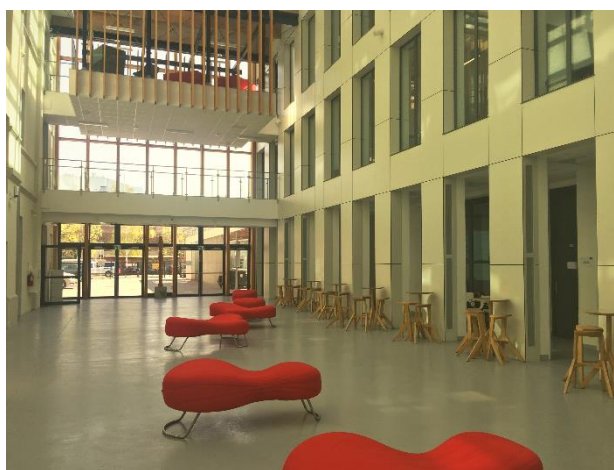
15-16 October 2019 | Warsaw, Poland

Venue, travel directions, and recommendations for accommodation

For questions, contact: info@informedcities.eu

Venue

Centre of Creativity Targowa
(Centrum Kreatywności Targowa)
Targowa 56
03-733 Warsaw



Centre of Creativity Targowa is an entrepreneurship incubator for creative industries and start-ups. Its goal is to support creative entrepreneurship as well as to integrate innovative projects and initiatives around Warsaw committed to development of the city. It provides them not only with technical and institutional support, but also offers them preferential rents, training, consulting and advice. The centre is located in a revitalised historic tenement building from 1867 in the Praga district of Warsaw.



Travelling to Warsaw

Train

Due to its central location in Europe, Warsaw is easy to reach by train. Polish train company – PKP Intercity offers connections with **EuroCity** - EC trains (express connections to European capitals), **EuroNight** trains (fast international night connections) as well as **MP** (international fast trains – day & night connections).

There are direct EC connections between Warsaw and Berlin, Prague, Ostrava, Vienna, Budapest, and the direct MP night trains to Warsaw from Moscow, Kiev, Minsk and Lviv.

For more information click [here](#) or check with your local railway tickets provider.

Bus

Several bus companies connect Warsaw on the international scene.

The Eurolines bus company as well as Flixbus connect cities from across Europe to Warsaw. Information about timetables and online bookings can be found on the [Eurolines](#) and the [Flixbus websites](#).

Airplane

The closest airport is Warsaw Chopin Airport, located 8 km southwest of central Warsaw. With the airport only 8 km away, there are a variety of transport modes connecting the airport to the central Warsaw station, including:

- S3 & S2 (SKM-Fast Urban Railway) – journey length: approximately 25 minutes, cost: 4,40 PLN
- RL (Regional Line) – journey length: approximately 25 minutes, cost: 4,40 PLN
- Bus 175 – journey length: approximately 30 minutes, cost: 4,40 PLN

The other airport – Warsaw Modlin Airport - is located 40 km north of Warsaw's city centre. There is a ModlinBus to the city centre (journey length: 40 minutes, cost: from 9 PLN). The taxi ride will last around 35 minutes and cost ca. 80 PLN.

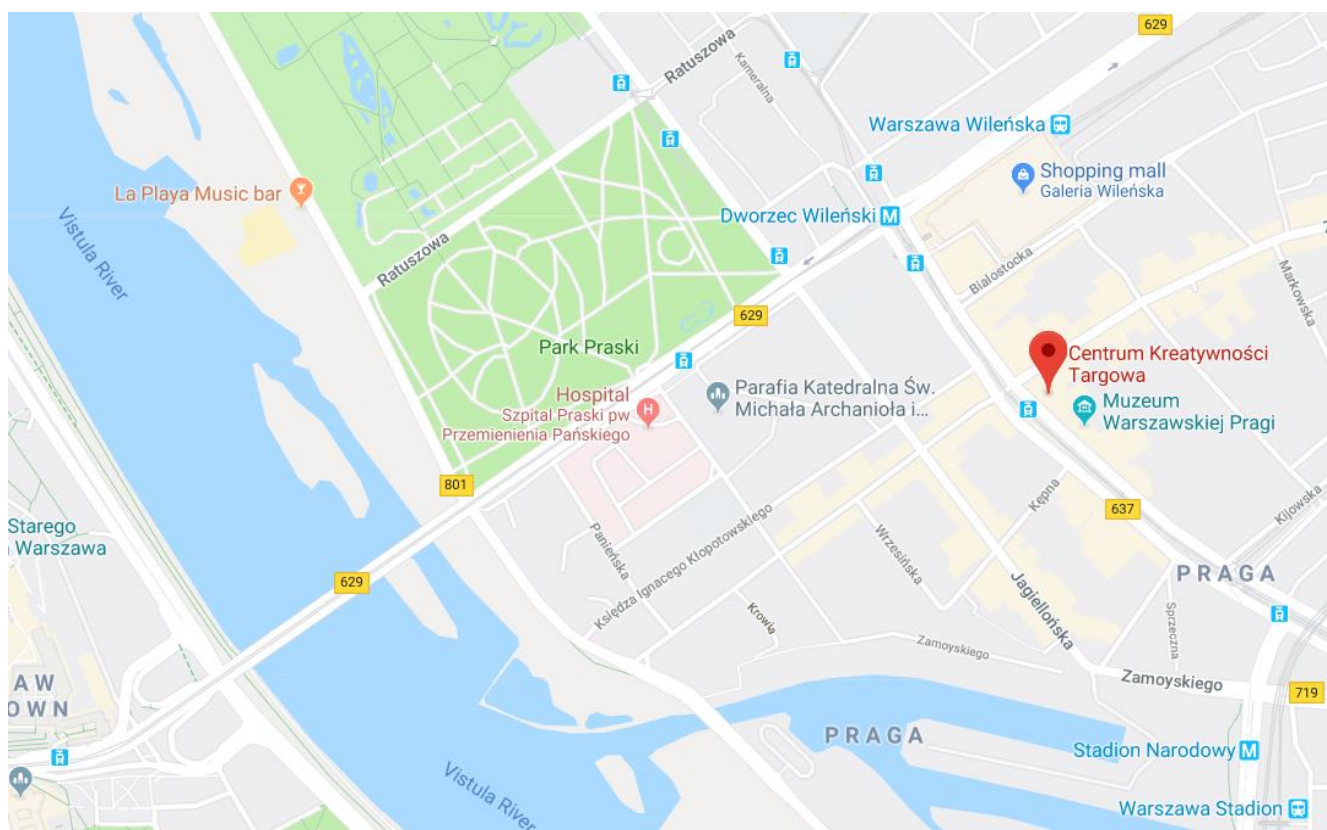
Getting to Centre of Creativity Targowa

In Warsaw, the cost for a single ticket when taking any mode of public transportation is 3.40 PLN for 20-minute ticket [*bilet 20-minutowy strefa 1+2*] and 4.40 PLN for 75-minute ticket [*bilet jednorazowy przesiadkowy strefa 1*]. These tickets entitle to an unlimited number of journeys for a period not exceeding 20 or 75 minutes from its validation. Tickets can be purchased in the machines available at most stops, or in most cases, in buses or trams.

Metro: the metro station **M2-Dworzec Wileński** is a 3 minute walk from the Centre of Creativity Targowa.

Tram: lines 3, 6, 13, 20, 23, 25, 26, 28 stop at **Ząbkowska**, directly in front of the Centre of Creativity Targowa.

Bus: lines 120, 138, 140, 166 and 169 stop at **Ząbkowska**, directly in front of the Centre of Creativity Targowa.

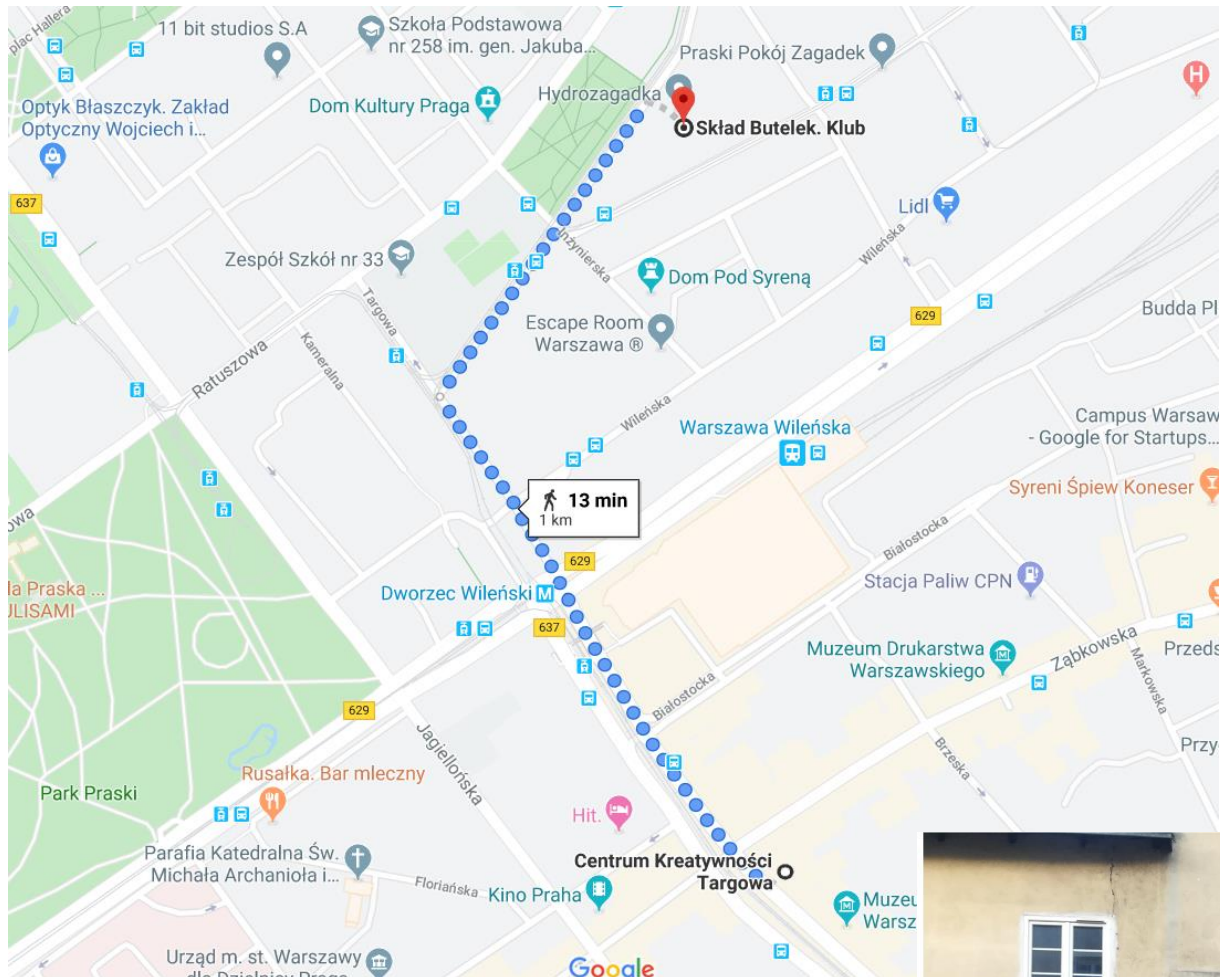


Getting to the evening event

Address:

SKŁAD BUTELEK

11 Listopada 22, Warsaw



Skład Butelek is a bar/café/jazz club or simply a “meeting point” for concerts, jam sessions, DJ sets or exhibitions in the Praga district of Warsaw. A heart of this club is the old basement – a place of numerous artistic performances and social gatherings. The bar was opened by twin sisters Olga and Magda, who with support from their family and friends created one of the best nightlife spots in Warsaw! **Skład Butelek** is a great example of a typical Pragian place: old furniture, home atmosphere and the energy of local artists gathered in one place. You can’t miss it!



Nearby hotels

ArtHotel Stalowa 52

- 90-110 EUR/night
- Stalowa 52, Praga Północ, 03-429 Warsaw
- <https://stalowa52.pl/en/>
- Distance from Centre of Creativity Targowa: 1,6 km

Hotel Hetman

- 70-90 EUR/night
- Ks. Kłopotowskiego 36, 03-717 Warsaw
- <http://www.hotelhetman.pl/en/>
- Distance from Centre of Creativity Targowa: 230 m

ApartHostel

- 40-60 EUR/night
- ul. Żąbkowska 23/25 lok.5, 03-736 Warsaw
- <https://www.aparthotelwarszawa.pl/home>
- Distance from Centre of Creativity Targowa: 400 m

Hotel Moxy Warsaw Praga

- 100-120 EUR/night
- Żąbkowska 29, Praga Północ, 03-736 Warsaw
- <http://moxy-hotels.marriott.com/en/hotels/warsaw-praga>
- Distance from Centre of Creativity Targowa: 600 m

Hotel Logos

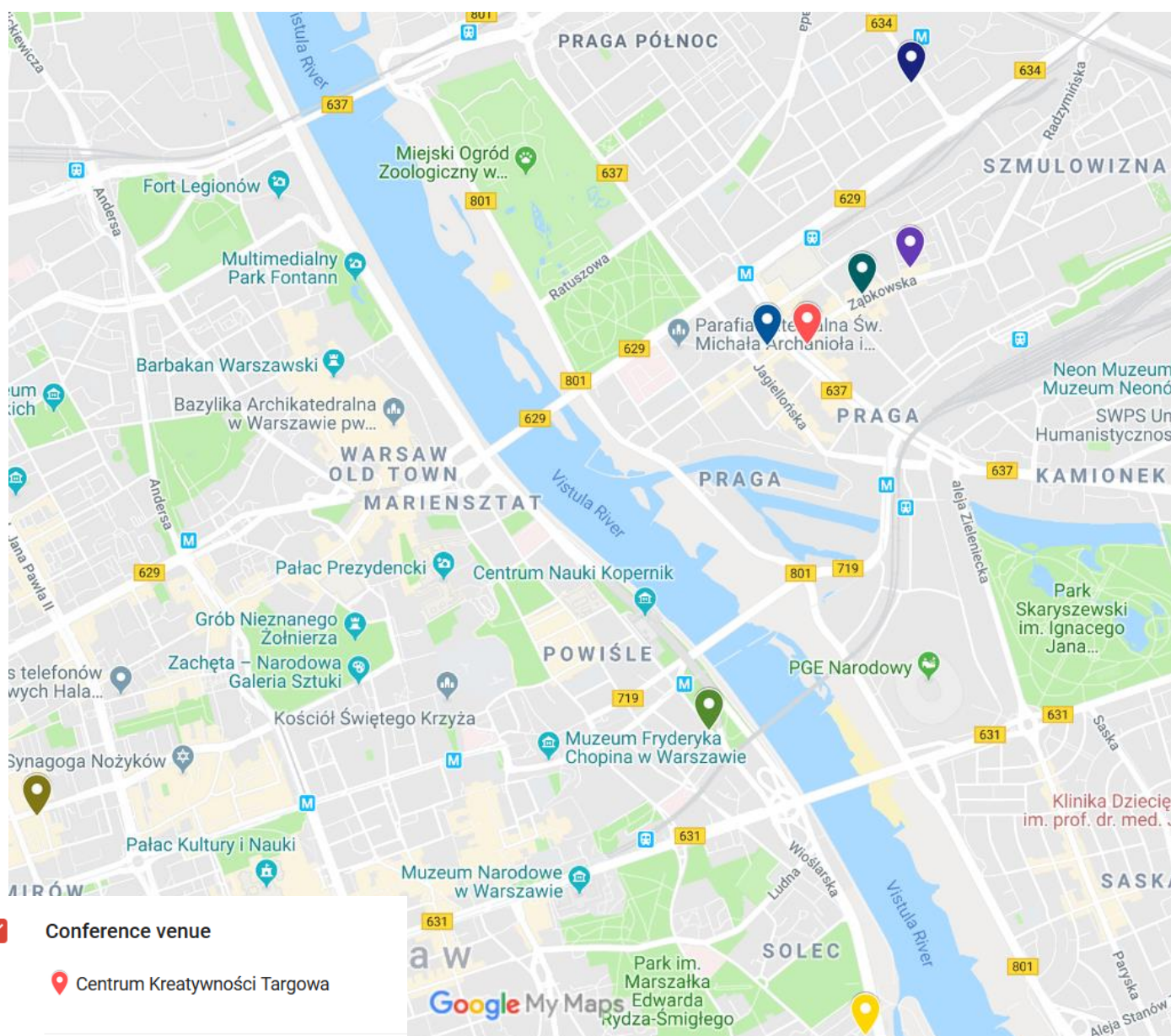
- 45-55 EUR/night
- Wybrzeże Kościuszkowskie 31/33, 00-379 Warsaw
- <https://www.hotellogos.pl/en/>
- Distance from Centre of Creativity Targowa: 2,3 km

Ibis Budget Warszawa Centrum

- 30 EUR/night
- Zagórna 1, 00-441 Warsaw
- <https://www.accorhotels.com/gb/hotel-6401-ibis-budget-warszawa-centrum/index.shtml>
- Distance from Centre of Creativity Targowa: 4,1 km

Ibis Styles Warszawa City

- 70-90 EUR/night
- Ul Grzybowska 43, Wola, 855 Warsaw
- <https://www.accorhotels.com/gb/hotel-B0R2-ibis-styles-warszawa-city-/index.shtml>
- Distance from Centre of Creativity Targowa: 4,4 km



Conference venue



Centrum Kreatywności Targowa



Hotels



Moxy Warsaw Praga



ARTHOTEL STALOWA 52



Hotel Hetman



ApartHostel Warszawa



Hotel LOGOS Warszawa



ibis Styles Warszawa City



ibis budget Warszawa Centrum

Link to interactive map: <http://bit.ly/31r829V>