



Informed Cities Forum 2013 & InContext Final Conference  
6-7 June 2013, Berlin (Germany)

**How to create space for change?**  
Rediscovering the power of community



**CONFERENCE COMPANION**

**Conference Venue: tak**  
Prinzenstrasse 85 F  
D-10969 Berlin

## DAY 1: THURSDAY, 6 JUNE 2013

9.00 - 9.30 REGISTRATION & COFFEE

9.30 - 10.30 OPENING SESSION

### Conference opening

**Ania Rok**, ICLEI

### Welcome to Berlin, the capital of transition?

*Keynote speeches*

**Hans Panhoff**, Borough Council, Friedrichshain-Kreuzberg

**Andreas Steinhauser**, Board of Directors, Holzmarkt eG

### Creating space for change - Setting the Scene

How can we unleash the transformative potential of local communities? The central topics of the InContext research will be outlined and guiding themes for the conference proposed.

**Anneke von Raggamby**, Ecologic Institute

### Acting for Sustainability - Act 1

*Theatre performance*

**Freiburg Scientific Theatre**

10.30 - 13.00 SESSION 1: CHANGING COMMUNITIES

### Stories of change

*Zoom: Three initiatives that are transforming the lives of local communities*

Facilitator: **Dr. Stefanie Baasch**, UFZ - Helmholtz Centre for Environmental Research

**Tessy Britton**, Social Spaces

**Chiara Camponeschi**, Enabling City

**Melanie Jaecques**, Thursday Veggeday, EVA

11.30 - 12.00 COFFEE BREAK

### The Power of Community

*Panel discussion*

- How do bottom-up initiatives appear and develop?
- What are they good for?
- And why do people want to be part of them?

*Questions from the audience*

13.00 - 14.00 LUNCH

14.30 - 18.00 SESSION 2: JOINING FORCES

### **Making change happen: local governments, citizens and researchers**

Interactive session to reflect on the role of different local actors in making change happen, using selected initiatives submitted by conference participants as a starting point for discussion

The focus will be on the following types of cooperation:

- Local governments & citizens (e.g. co-creation processes)
- Local governments & researchers (e.g. local city-university cooperation)
- Researchers & citizens (e.g. action research projects)

16.30 - 17.00 COFFEE BREAK

### **Acting for Sustainability - Act 2**

*Theatre performance*

**Freiburg Scientific Theatre**

### **Towards a common understanding**

*Interviews and discussions following the interactive session*

**Wrap-up**

20.00 DINNER

### **Sunset Dinner on the Rails**

Evening at a former railway depot, home to the Center for Art and Urbanistics (ZKU), in one of Berlin's transforming neighborhoods

*Putting InContext in context*

**Professor Tim O'Riordan**, University of East Anglia

**Harry Sachs**, Center for Art and Urbanistics

### **ZKU – Center for Art and Urbanistics**

Siemensstrasse 27

10551 Berlin

Metro stop: Birkenstraße (U9)

Train stop: Westhafen (S41, S42, S45, S46)

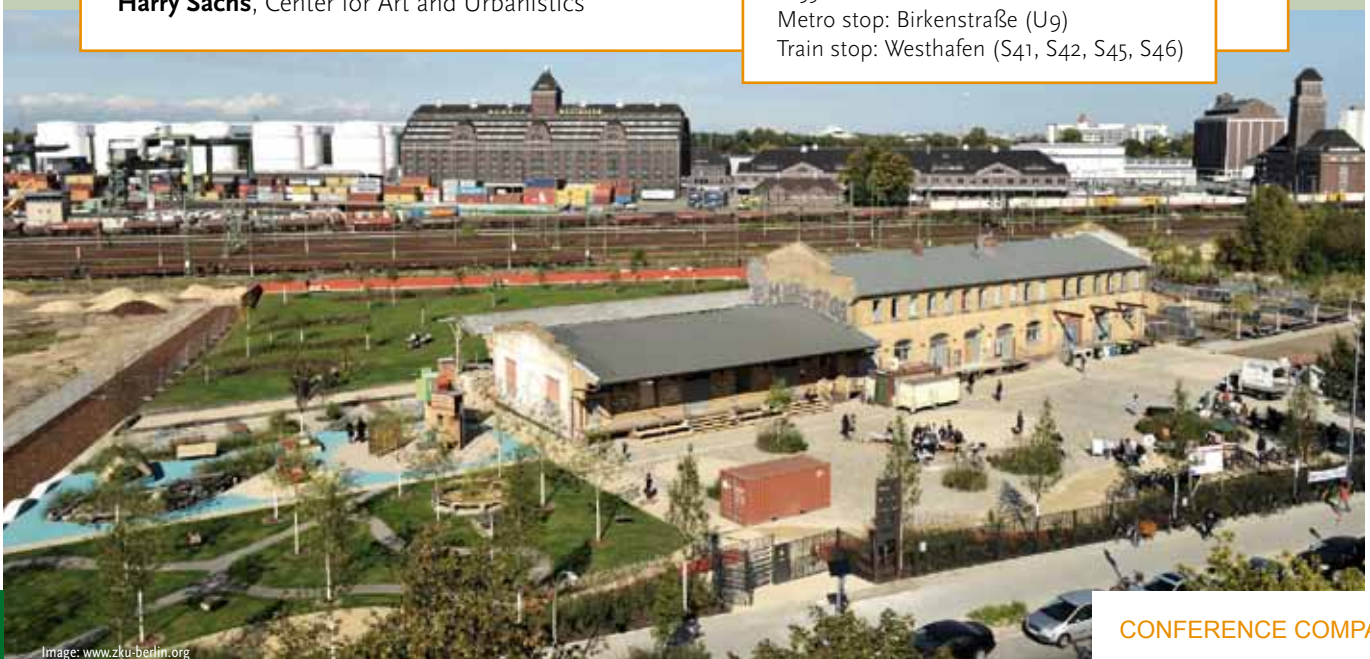


Image: www.zku-berlin.org

## DAY 2: FRIDAY, 7 JUNE 2013

9.30 - 12.30 SESSION 3: UNDERSTANDING THE PROCESS

### **Introducing transition management**

*Interactive presentation illustrated with local examples*

Do you want to know how to mobilise a community to help guide and accelerate local sustainability transitions? This interactive session will introduce you to the practice and theory of 'facilitating community arenas, empowering local change agents and creating breakthrough projects'.

**Derk Loorbach**, DRIFT - Dutch Research Institute for Transitions

**Stephanie Baasch**, UFZ - Helmholtz Centre for Environmental Research

**Ines Omann**, SERI - Sustainable Europe Research Institute

### **Acting for Sustainability - Act 3**

*Theatre performance*

**Freiburg Scientific Theatre**

10.30 - 11.00 COFFEE BREAK

### **Local governments & communities – a researcher's perspective**

*Presentation outlining findings and recommendations of the InContext project*

The InContext team initiated three 'transition arenas' and observed four existing initiatives for alternative living in local communities across Europe. It combines these action-orientated interventions with conceptual thinking about sustainable lifestyles. The speakers reflect on the insights gained and invite participants to provide feedback from a local government perspective.

**Anneke von Raggamby** and **Katharina Umpfenbach**, Ecologic Institute

### **How to govern a city where everyone is a decision-maker?**

*Panel discussion of local government representatives on the challenges and benefits of co-creation*

Facilitator: **Julia Wittmayer**, DRIFT - Dutch Research Institute for Transitions

**Prof. Anna Davies**, Trinity College Dublin

**Mads Uldall**, Project Manager, City of Copenhagen

**Carles Agustí i Hernández**, Commissioner for Citizen's Participation, Barcelona City Council

**Eva Maria Sköld**, Green Party, Malmö City Council

*Questions from the audience*

12.30 - 13.00 CLOSING SESSION

**Summary & outlook**

13.00 - 14.30 LUNCH

at **Prinzessinnengärten**  
(good weather option) see page 5



15.00 - 18.00 STUDY VISITS

### Still looking for inspiration?

Join us on a tour of Berlin's most interesting initiatives related to urban governance, local sustainability and citizen participation.

- [1] **Prinzessinnengärten** (more information below), Duration: 1 hour plus extra hands-on option
- [2] **Aufbau Haus** (more information on page 6), Duration: 1 hour plus free browsing time
- [3] **IMA Design Village and betahaus** (more information on page 6), Duration: 3 hours
- [4] **Space for Change Bike Tour** (more information on page 7), Duration: 3 hours
- [5] **Former Tempelhof Airfield** (more information on page 7), Duration 2 hours

1

### Prinzessinnengärten

A guided tour and hands-on gardening in the Prinzessinnengärten, a community gardening project in Berlin Kreuzberg, on a site which was a wasteland for over half a century. This site is located in the immediate neighborhood of the conference venue. Marco Clausen, co-founder of Prinzessinnengarten, will give a guided tour. He will talk about the original idea for this social and ecological space for urban agriculture and how it came into being with the help of hundreds of volunteers. He will explain the main principles and goals of the non-profit organization Nomadic Green. Its main focus lies in promoting social and environmental policy, especially in the fields of education for sustainable living, resilient food systems, community empowerment and sustainable city development. He will give an overview of the recent struggle to keep the garden and the engagement in city policy making, especially in regard of the usage and management of public property. After the tour, participants will have the chance to make their hands dirty and work practically in the garden.

**Starting time on site:** 15.00

**Duration:** 1 hour guided tour, 1 hour of active hands-on gardening work for interested participants

**Meeting point:** take at 15:45

[www.prinzessinnengarten.net](http://www.prinzessinnengarten.net)



Images: [www.prinzessinnengarten.net](http://www.prinzessinnengarten.net)

## 2

### Aufbau Haus

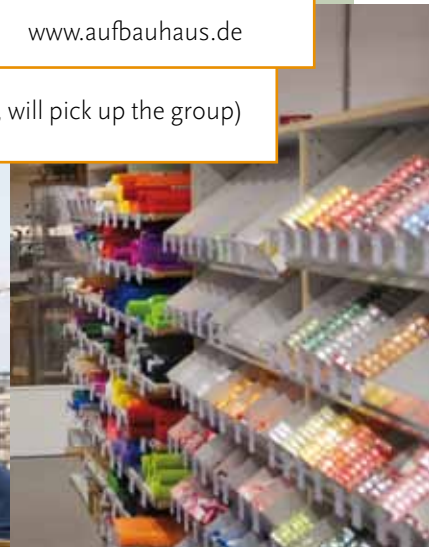
A guided tour around the Aufbau Haus, the creative center in Berlin Kreuzberg, and home of our conference venue, the tak. The Aufbau Haus at Berlin's Moritzplatz is an innovative new presence in the city's cultural landscape. Following a two-year construction phase, the publishing group Aufbau Verlag (which gave the building its name) took up residence on the upper floors of the renewed building. Modulor, along with its numerous partner companies from the production and service realm (Planet Modulor), occupy the other floors since June 2011. The roughly 17,500 square meters of the Aufbau Haus accommodate a wide variety of contemporary artistic and creative industries. On the rooftop the Kindergarten Wildfang provides all-day child care. Dancers and theater players find rehearsal space in newly build studios and time to share their experiences.

**Starting time on site:** 15.00

**Duration:** around 1 hour with the option of continuing to explore the house's many stores and creative spaces on your own

**Meeting point:** tak at 15:45 (Ms Kusche, Head of Communications, Aufbau Haus, will pick up the group)

[www.aufbauhaus.de](http://www.aufbauhaus.de)



Images: [www.aufbauhaus.de](http://www.aufbauhaus.de)

## 3

### IMA Design Village and betahaus

A guided tour of two different coworking spaces for creative minds, the IMA Design Village and the betahaus. Founded in January 2009, IMA Design Village has established itself as a creative community space - an open initiative that seeks to enable exciting platforms for dialogue and production. At a short walking distance lies the betahaus, a coworkingspace offering about 2,000 sqm room for innovations, creativity, events and professional working. Since 1 April 2009 about 200 freelance professionals from the creative scene have been working here and a number of great start ups grew up in the betahaus.

**Starting time on site at IMA:** 15.00

**Duration:** 3 hours, ends at Betahaus, 3 minutes walk from conference venue tak

**Meeting point:** tak at 14:30, walk to IMA Design Village together

[www.betahaus.de](http://www.betahaus.de)



Images: [www.betahaus.de](http://www.betahaus.de)

## 6



4

### Space for Change Bike Tour

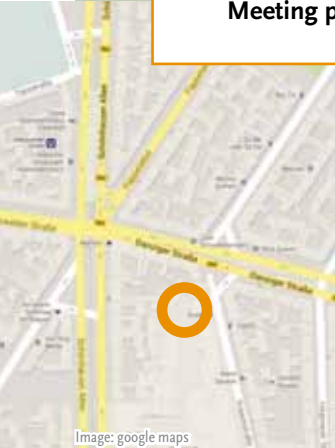
A guided bicycle tour along a selection of Berlin's community-driven transformation hotspots (for the action-oriented biker). The tour will start off at Kulturbrauerei, a restored brewery which today houses theatres, a cinema, clubs and event locations, and has become an integral part of Prenzlauer Berg's cultural scene. Major destinations along the way are the Willner Brewery, hosting artists and exhibits, the Mauerpark, Alexanderplatz, Mediaspree and Project Spree 2011, living examples of Berlin's ongoing transformation.

**Starting time on site at Berlin on Bike:** 15.00, Prenzlauer Berg

**Duration:** 3 hours, starts and ends at Berlin on Bike, 30 minutes by subway from the conference venue

**Meeting point:** tak at 14:30, public transportation to Berlin on Bike, Prenzlauer Berg

[www.berlinonbike.de](http://www.berlinonbike.de)



**From tak to Berlin by Bike:** U Moritzplatz: U8 (direction: S+U Wittenau) → S+U Alexanderplatz: U2 (direction: S+U Pankow) → U Eberswalder Str.

5

### Former Tempelhof Airfield

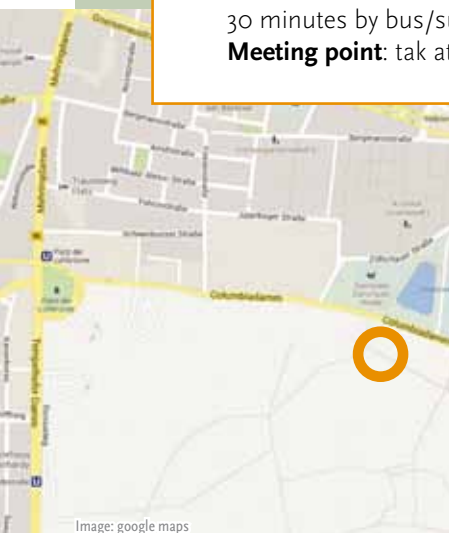
A guided outdoor walking tour of the former airfield of Tempelhof, which today is being developed into an urban parkland. It has been open to all since 8 May 2010. Since that time, visitors to the former airport site have particularly enjoyed the luxury of its broad open spaces, located deep within the city. The present form of the open space is a transitional stage and starting-point for what will be an ongoing development process. From this space, once used only for airport operations, publicly developed, multi-use, structured urban parkland will gradually arise. The organization of the International Horticultural Exhibition Berlin 2017 will be a particular milestone on the way to creation of the new park landscape, and will be an important engine in the overall development of "Tempelhofer Freiheit".

**Starting time on site at Tempelhofer Airfield:** 15.00, info pavillion, Columbiadamm

**Duration:** 2 hours, starts and ends at Tempelhofer Airfield, 30 minutes by bus/subway from the conference venue

**Meeting point:** tak at 14:30, public transportation to info pavillion, Columbiadamm

[www.tempelhoferfreiheit.de](http://www.tempelhoferfreiheit.de)



**From tak to info pavillion, Columbiadamm:** U Moritzplatz: U8 (direction: S+U Hermannstr.) → U Boddinstr.: Bus 104 (direction: Neu-Westend, Brixplatz) → U Columbiadamm/ Friesenstr. Or: U Moritzplatz: Bus M29 (direction: Wittenbergplatz) → U Kochstr./ Checkpoint Charlie: U6 (direction: U Alt-Mariendorf) → U Platz der Luftbrücke

7

## Contact List

**Elena von Sperber**, Ecologic Institute  
Fon: +49 (0)151 590 563 51  
E-mail: elena.sperber@ecologic.eu

**Chiara Mazzetti**, Ecologic Institute  
Fon: +49 (0)160 435 95 18  
E-mail: chiara.mazzetti@ecologic.eu

**Claudia Kiso**, ICLEI Europe  
Fon: +49 (0)152 088 057 99  
E-mail: claudia.kiso@iclei.org

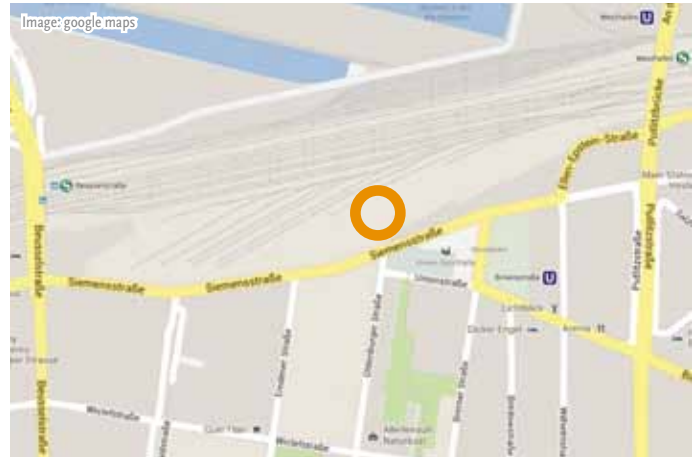
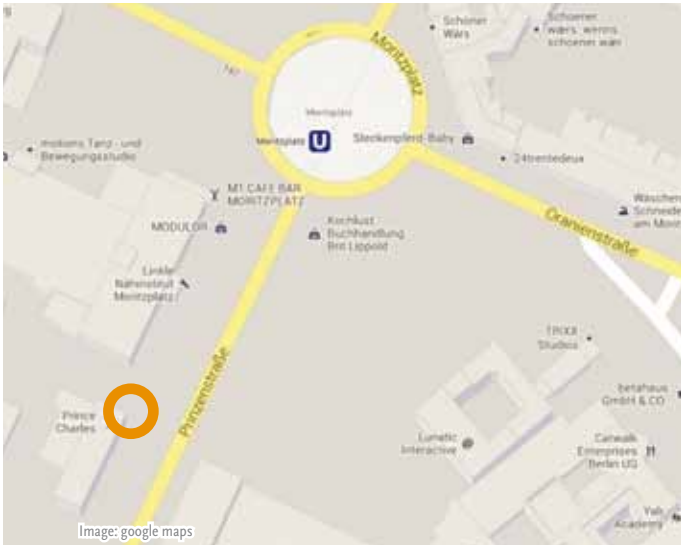
## Venues

### Conference Venue: tak

Prinzenstrasse 85F  
10969 Berlin  
Fon: +49 (0)30 505 67 000/ -001  
E-mail: info@theater-aufbau-kreuzberg.de

### Dinner Venue: Center for Art and Urbanistics (ZKU)

Siemensstrasse 29  
10551 Berlin  
Fon: +49 (0)30 398 858 40  
E-mail: info@zku-berlin.org



### From tak to the Center for Art and Urbanistics (ZKU)

Zones: AB, about 40min, 2,40€: U Moritzplatz: U8 (direction Wittenau)  
→ U Osloer Strasse: U9 (direction Rathaus Steglitz) → U Birkenstrasse

### Public transportation

BVG journey planner: [www.bvg.de](http://www.bvg.de)

For finding the fastest way while on the go, use the helpful smartphone app 'Berlin FahrInfo'.



### Tickets

Ticket machines are located at all train, underground and urban rail stations. When riding a bus, you can also buy the ticket from the driver (note that bus drivers only have a very small amount of change available and cannot give change for larger bank notes). For inner city use zones AB are sufficient, for the surroundings (including Schönefeld airport) you will need zone C.

### Bikes

If you have time to explore Berlin after the conference, renting a bike can make it possible for you to tour the city as you please. Bike rental places often offer guided sightseeing tours as well. See, for example: [www.berlinfahrradverleih.com](http://www.berlinfahrradverleih.com) | [www.berlinonbike.de/en](http://www.berlinonbike.de/en)

### Taxi

Eco-Taxi: +49 (0)30 210 10 | Würfelfunk: +49 (0)30 210 101

